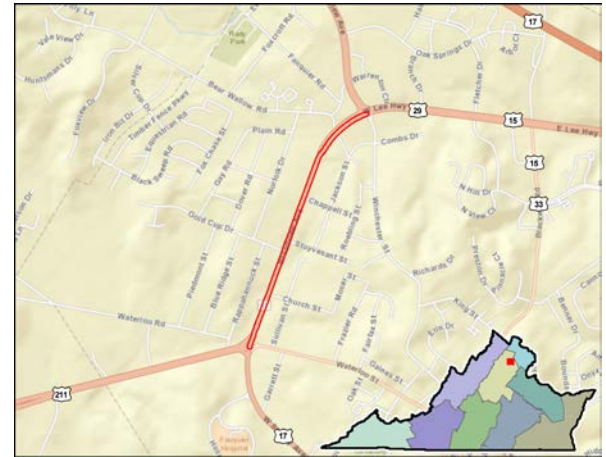


Broadview Avenue Access Management Improvements

App Id: 1267

Improvements to Broadview Avenue for access management and safer turning movements in and out of properties along this corridor, to include bike lanes for an alternate mode of transportation, and to enhance economic infill and redevelopment.

Project Location..... Warrenton
 SMART SCALE Area Type..... C
 Submitting Entity..... Warrenton Town
 Preliminary Engineering..... Underway
 Right of Way..... Not Started
 Construction..... Not Started
 Expenditures to Date..... \$740,232
 Key Fund Sources..... Fed-State Disc
 Administered By..... VDOT
 Eligible Funding Program(s)..... Both
 VTrans Need..... Coastal Corridor CoSS
 (Click for details)



<h1>5.9</h1> <p>SMART SCALE SCORE</p>	<h2>#125</h2> <p>OF 404 STATEWIDE</p>
	<h2>#11</h2> <p>OF 35 DISTRICTWIDE</p>

SMART SCALE Requested Funds..... **\$2,590,000**
 Total Project Cost..... **\$4,640,000**
 Project Benefit..... **1.5**
 Project Benefit / Total Cost..... **3.3**

Factor	Congestion Mitigation		Safety		Accessibility			Economic Development			Environment		Land Use
	Increase in Peak Period Person Throughput	Reduction in Peak Period Delay	Reduction in Fatal and Injury Crashes	Reduction in Fatal and Injury Crash Rate	Increase in Access to Jobs	Increase in Access to Jobs for Disadvantaged Populations	Increase in Access to Multimodal Travel Choices	Square Feet of Commercial/Industrial Development Supported	Tons of Goods Impacted	Improvement to Travel Time Reliability	Potential to Improve Air Quality	Other Factor Values Scaled by Potential Acreage Impacted	Support of Transportation-Efficient Land Development
Measure Value	32.1 <small>thousand persons</small>	0 <small>thousand person hrs.</small>	17.9 <small>EPDO</small>	190.9 <small>EPDO / 100M VMT</small>	0 <small>jobs per resident</small>	0 <small>jobs per resident</small>	96.3 <small>adjusted users</small>	731,124.0 <small>thousand adj sq. ft.</small>	0 <small>thousand adj daily tons</small>	8,950,927.4 <small>adj. buffer time index</small>	128.4 <small>adjusted points</small>	1.2 <small>tscaled points</small>	<small>adjusted jobs & pop.</small>
Normalized Measure Value (0-100)	0.3	0	5.4	1.0	0	0	0.7	2.6	0	0.2	0.7	2.4	
Measure Weight (% of Factor)	50%	50%	50%	50%	60%	20%	20%	60%	20%	20%	50%	50%	N/A
Factor Value	0.2		3.5		0.1			1.6			1.6		0
Factor Weight (% of Project Score)	15%		25%		25%			25%			10%		N/A
Weighted Factor Value	0		0.8		0			0.4			0.2		
Project Benefit	1.5												
SMART SCALE Cost	\$2,590,000												
SMART SCALE Score (Project Benefit / SMART SCALE Cost)	5.9												